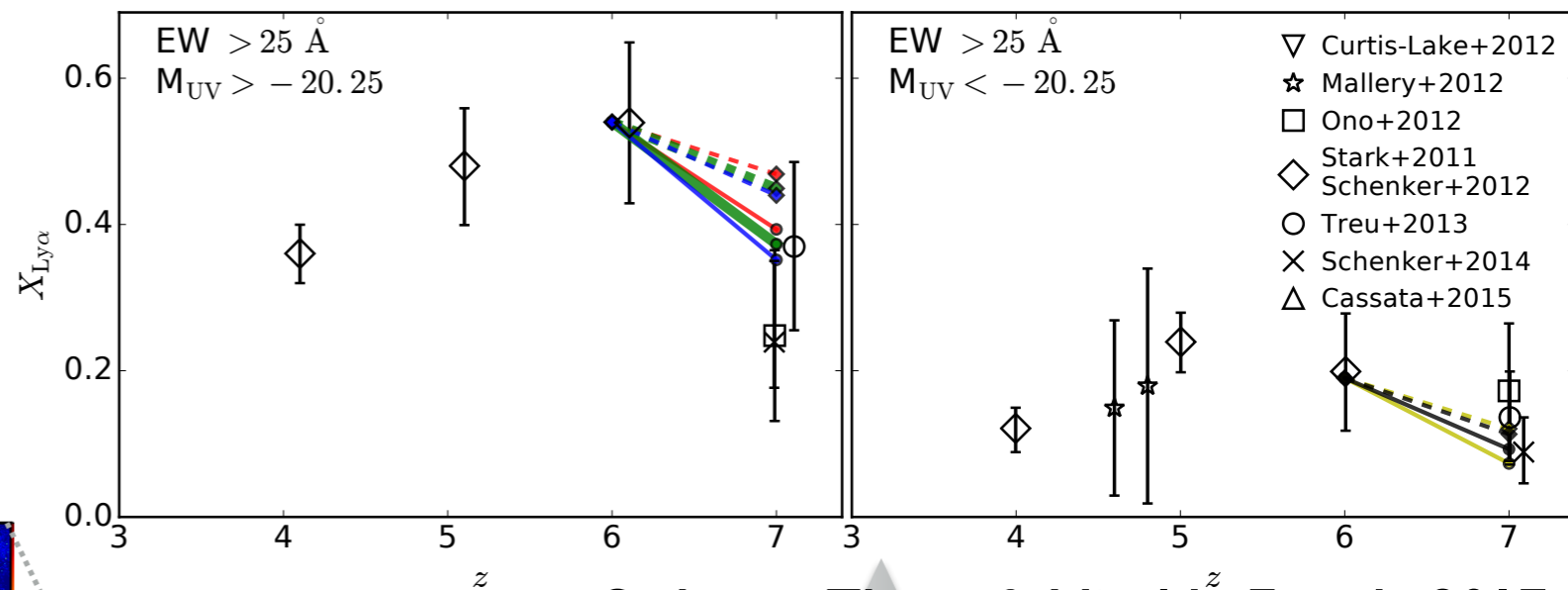
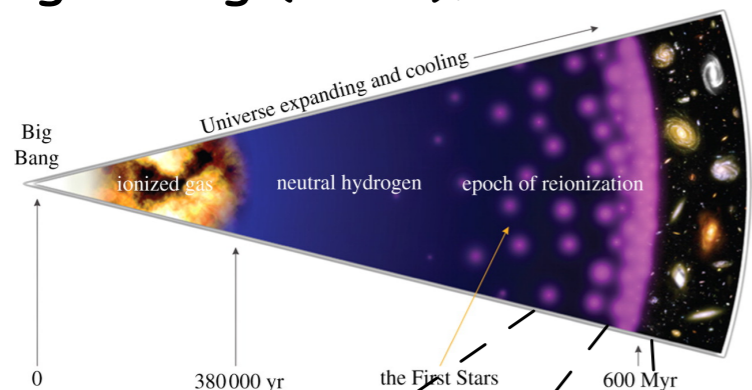


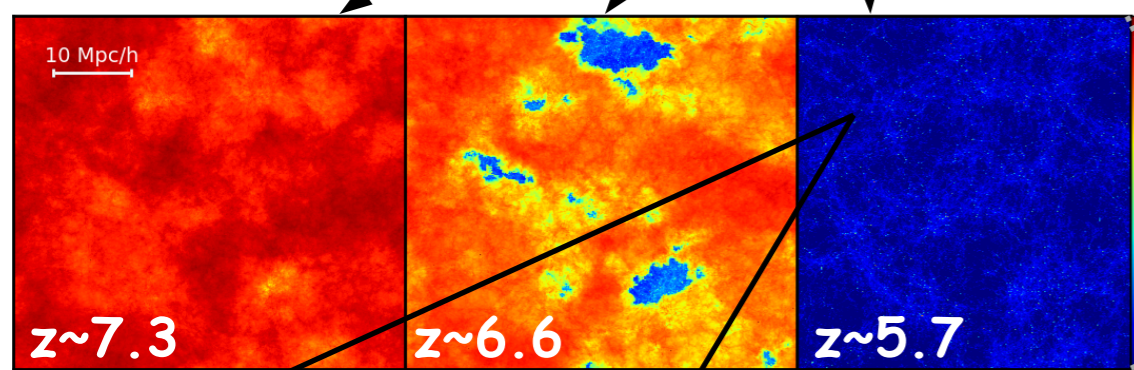
# Probing the CGM and IGM during the EoR with Ly $\alpha$ Emitting Galaxies

Raphael Sadoun (ICCUB)

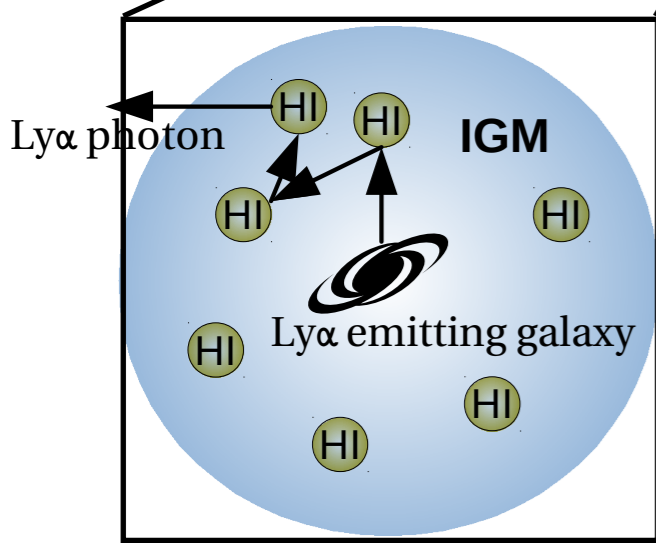
Zheng Zheng (Utah), Jordi Miralda-Escude (ICCUB), Renyue Cen (Princeton), Hy Trac (CMU)



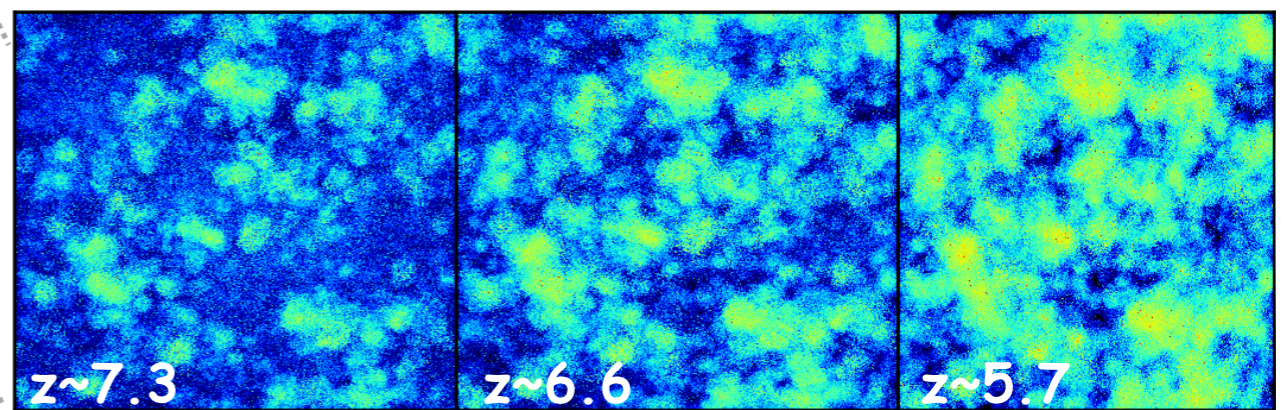
Sadoun, Zheng & Miralda-Escudé 2017



Trac, Cen & Mansfield 2015



Monte-Carlo  
Ly $\alpha$  radiative transfer  
calculations



Ly $\alpha$  properties

# Probing the CGM and IGM during the EoR with Ly $\alpha$ Emitting Galaxies

Ly $\alpha$  radiative transfer applied to cosmological reionization simulation (Scorch/RadHydro, Trac+2015): 50 Mpc/h box,  $1536^3$  grid cells

