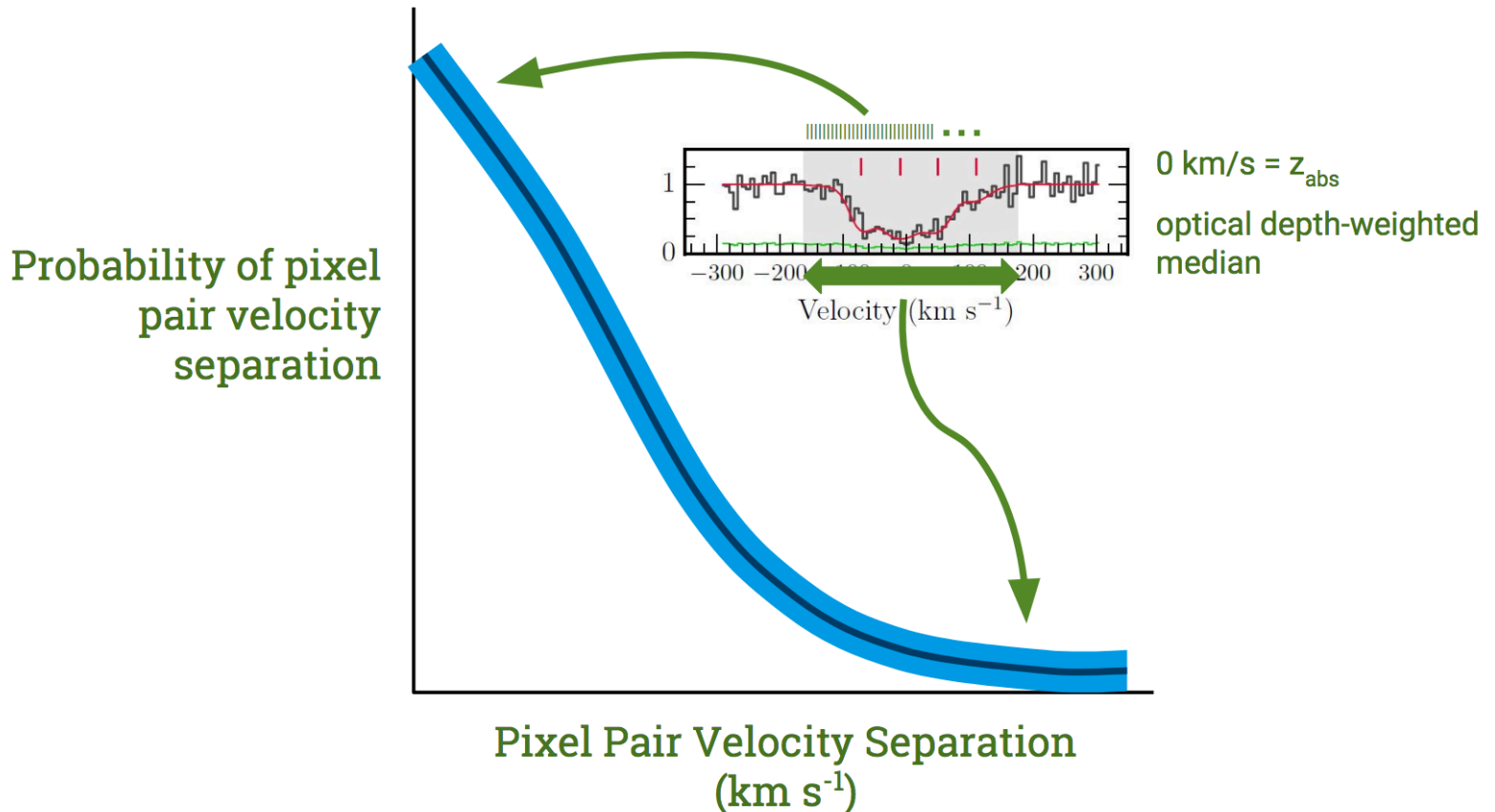


Halo Mass and Outflows Driving OVI Kinematics

Mason Ng, Nielsen, Kacprzak, Muzahid, Pointon, Churchill, Charlton, in prep

Absorption Kinematics: Pixel-Velocity TPCF

(Two-Point Correlation Function)

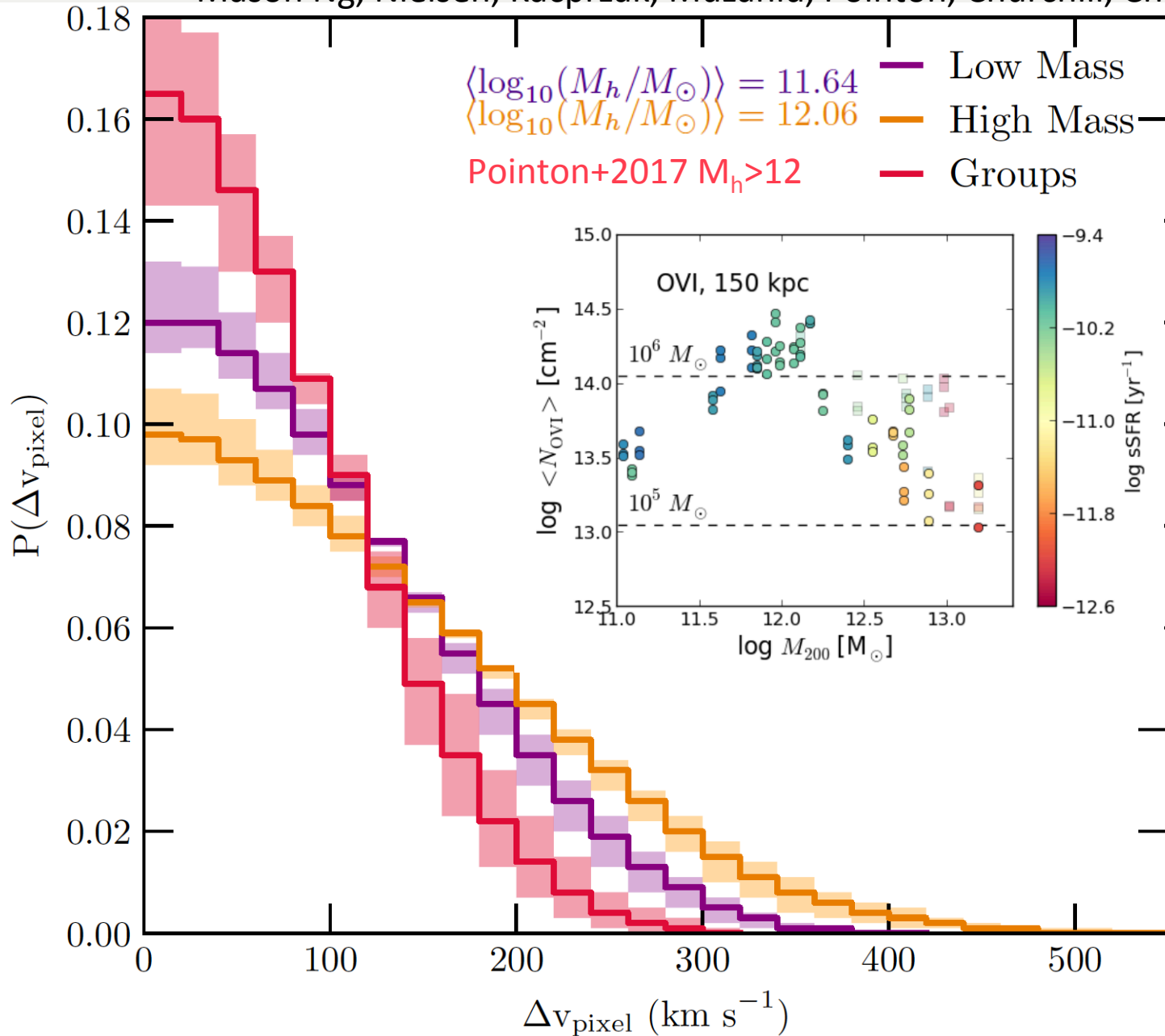


Nielsen et al. 2015, 2016, 2017, 2018

30 galaxies with detected OVI absorption (can't do a kinematic study with no OVI)

Halo Mass and Outflows Driving OVI Kinematics

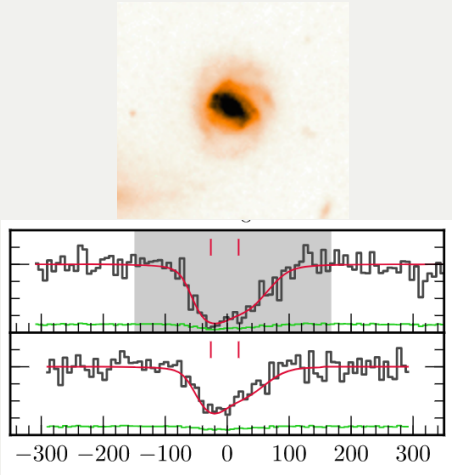
Mason Ng, Nielsen, Kacprzak, Muzahid, Pointon, Churchill, Charlton, in prep



OVI-halo mass dependence on kinematics and $N(\text{OVI})$

Halo Mass and Outflows Driving OVI Kinematics

Mason Ng, Nielsen, Kacprzak, Muzahid, Pointon, Churchill, Charlton, in prep



Shift OVI to z_{gal} .

We find a geometric preference suggesting outflows drive OVI kinematics in a mass dependent way.

